

**CONSTRUCTION & MAINTENANCE
OF 54 Nos.OF MODERN BUS
SHELTERS
ALONG RAJIV GANDHI SALAI
(IT CORRIDOR)**

(From SRP Tools Junction to Siruseri in 17 km road)

On

BOT Basis

Request for Proposal



**IT EXPRESSWAY LTD
(ITEL)**

DISCLAIMER

This Request for Proposal (RFP) is issued by IT Expressway Ltd (ITEL) the SPV formed by Tamil Nadu Road Development Company Ltd (TNRDC) for the purpose of implementing IT Corridor Project in Chennai. Rajiv Gandhi Salai (IT Corridor) under the Improvement & Maintenance Scheme as per long term Agreement between GoTN & ITEL

The RFP is not a prospectus or offer or invitation to the public in relation to the sale of shares, debentures or securities, nor shall this RFP or any part of it form the basis of or be relied upon in any way in connection with, any contract relating to any shares, debentures or securities.

Whilst the information in this RFP has been prepared in good faith, it is not and does not purport to be comprehensive or to have been independently verified. Neither ITEL/TNRDC, nor any of its officers or employees, nor any of their advisers nor consultants accept any liability or responsibility for the accuracy, reasonableness or completeness of, or for any errors, omissions or misstatements, negligent or otherwise, relating to the proposed road Project, or make any representation or warranty, express or implied, with respect to the information contained in this RFP or on which this RFP is based or with respect to any written or oral information made or to be made available to any of the recipients or their professional advisers and, so far as permitted by law and except in the case of fraudulent misrepresentation by the party concerned, any liability therefore is hereby expressly disclaimed.

The information contained in this RFP is selective and is subject to updating, expansion, revision and amendment. It does not, and does not purport to, contain all the information that a recipient may require. Neither ITEL/TNRDC nor any of its officers, employees nor any of its advisors nor consultants undertake to provide any recipient with access to any additional information or to update the information in this RFP or to correct any inaccuracies therein which may become apparent. Each recipient must conduct its own analysis of the information contained in this RFP or to correct any inaccuracies therein and is advised to carry out its own investigation into the proposed road Project, the legislative and regulatory regime which applies thereto and all matters pertinent to the proposed Project and to seek its own professional advice on the legal, financial, regulatory and taxation consequences of entering into any agreement or arrangement relating to the proposed Project.

This RFP includes certain statements, estimates, projections, targets and forecasts with respect to the road Project. Such statements estimates, projections, targets and forecasts reflect various assumptions made by the management, officers and employees of ITEL/ TNRDC, which assumptions (and the base information on which they are made) may or may not prove to be correct. No representation or warranty is given as to the reasonableness of forecasts or the assumptions on which they may be based and nothing in this RFP is, or should be relied on as, a promise, representation or warranty.

SCHEDULE OF BIDDING PROCESS

| S. No. | EVENT DESCRIPTION | DATE |
|--------|---|---|
| 1 | ISSUE OF RFP DOCUMENT PACKAGE TO APPLICANTS | 14 TH DECEMBER 2012 TO 07 TH JANUARY 2013 |
| 2 | LAST DATE OF RECEIVING QUERIES, IN CASE THE QUERIES TO BE ANSWERED IN PRE-BID | 19 TH DECEMBER 2012 |
| 3 | PRE-BID CONFERENCE | 21 ST DECEMBER 2012 |
| 4 | LAST DATE OF PURCHASE OF RFP DOCUMENT PACKAGE | 07 TH JANUARY 2013 |
| 5 | LAST DATE FOR SUBMISSION OF PROPOSALS | 09 TH JANUARY 2013 AT 15.00 HRS |
| 6 | DATE FOR OPENING OF TECHNICAL PROPOSALS | 09 TH JANUARY 2013 AT 15.30 HRS |
| 7 | DATE FOR OPENING OF FINANCIAL PROPOSALS | DATE WILL BE INTIMATED TO THE QUALIFYING BIDDERS |

ITEL will endeavor to adhere to the dates indicated above. However, it reserves the right to effect changes to the above dates, if the need arises. Such change would be uploaded in the official website of ITEL/TNRDC (www.tnrdc.com)

Contents of RFP Document Package

The RFP document package comprises the following documents as listed below, and would additionally include any Addenda issued before the due date of submission of the RFP. Any reference to the RFP Document package includes all the contents unless specifically mentioned otherwise.

Contents

Notice Inviting Tender

Part A Instructions to Bidders

Part B RFQ Document

Part C RFP Document

Part D Draft Concession Agreement and Schedules

NOTICE INVITING TENDER
(NIT)



IT EXPRESSWAY LTD

INVITATION FOR PROPOSALS

(National Competitive Bidding Under Single Stage Bidding Process)

Proposals are invited by **M/s. IT Expressway Ltd. (ITEL)** for implementation of the following work in **Rajiv Gandhi Salai (IT Corridor), Chennai, Tamil Nadu.**

| Project | Construction Period | Concession Period |
|---|---------------------|-------------------|
| Construction & Maintenance of 54 Nos. of Modern Bus Shelters along Rajiv Gandhi Salai (IT Corridor) from SRP Tools Junction to Siruseri in 17 Km Road under BOT Basis in Chennai, Tamil Nadu. | Nine (9) Months | Nine (9)Years |

“Request for Proposal” (RFP) document package can be obtained between **10.00 hrs** and **17.00 hrs** on all working days from **14th December 2012** to **07th January 2013** at the address for communication mentioned below on payment of Non-refundable fee of **INR 30,000/- (Rupees Thirty Thousand Only)** by way of a crossed demand draft drawn in favour of **M/s IT Expressway Ltd.**, payable on any scheduled bank in **Chennai**. Alternatively, the RFP Document Package can also be downloaded from www.tnrdc.com and in such cases, the bidders will be required to pay the non-refundable fee as mentioned above, at the time of submission of proposals.

EMD/ Bid Security value for the work is INR 5,50,000/- (Rupees Five Lakhs Fifty Thousand Only).

The proposals shall be submitted through Two - Cover System (Technical and Financial Proposals in separate envelopes).

Sealed proposals should reach at the following address not later than **15.00 hrs** on **09th January 2013**.

Address for communication

General Manager (Projects) / ITEL,
IT Expressway Ltd,
 Regd. Office: Sindur Panthion Plaza,
 2nd Floor, No. 346, Pantheon Road,
 Egmore, Chennai – 600 008,
 Tamil Nadu, India

Phone : 091-44-2819 4800 / 4900

Fax No. 091-44-2819 5800

E-Mail : tenders@tnrdc.com

Web : www.tnrdc.com

IT EXPRESSWAY LTD

**SINDUR PANTHION PLAZA, 2ND FLOOR, 346-PANTHEON ROAD, EGMORE, CHENNAI-600008,
TAMIL NADU**

National Competitive Bidding Under Single Stage Bidding Process

IT Expressway (ITEL) invites Private Sector Participation for Construction & Maintenance of 54 Nos. of Modern Bus Shelters along Rajiv Gandhi Salai (IT Corridor) from SRP Tools Junction to Siruseri in 17 Km Road under BOT Basis in Chennai, Tamil Nadu.

IT Expressway invites National, Inter National Independent firms/Joint Ventures/Lead Partners of consortiums interested in the project to submit their bids.

BACKGROUND

TNRDC is a pioneering Public Private Partnership Initiative in the forefront of bringing a paradigm shift in road development and management, transforming traveling into a sublime experience.

The Company is an innovative and unique institutional mechanism that complements the visionary zeal and administrative strength of Government of Tamil Nadu in infrastructure projects.

ITEL is today considered a benchmark institution for development of infrastructure projects under Public-Private Partnership framework. Its project models have become templates that are being widely replicated across sectors and States.

TNRDC has incorporated a special purpose vehicle titled IT Expressway Ltd (ITEL) as its subsidiary, for domiciling the IT Corridor Project. ITEL being an investment vehicle, has engaged TNRDC as its Managing Associate and is responsible for project implementation of IT Corridor

Rajiv Gandhi Salai is a major road connecting Chennai with Mamallapuram in Tamil Nadu. It is 45 km long and was earlier known as the Old Mahabalipuram Road (OMR). The road starts from Madhya Kailash Temple Junction on Sardar Patel Road in south-east Chennai and terminates on East Coast Road near Mamallapuram.

The prestigious [TIDEL Park](#), home to a number of BPO and IT/ITES companies and many other major IT/ITES Companies in the country are situated along the Rajiv Gandhi Salai. Prominent technical and educational Institutions, national research laboratories are also located along the IT Corridor.

Besides, [State Industries Promotion Corporation of Tamil Nadu Ltd \(SIPCOT\)](#) has developed a Cyber City, spread over 2000 acres in Siruseri, abutting the IT Corridor. Many IT/ITES Companies have set up their facilities in the Cyber City.

The opening of the Mass Rapid Transit Line along the first three km stretch and the presence of densely populated residential areas along the Kottivakkam - Perungudi stretch had also led to congestion and accidents. The IT Corridor Project aims at improving the Corridor to a world-class facility in tune with the progressive and IT/ITES friendly image of Tamil Nadu.

A total of **54 Nos.** of bus shelters in 42 locations, along Rajiv Gandhi Salai (IT Corridor) are selected for construction of Modern Bus Shelters.

This Bid Document comprises Construction, Operation and Maintenance of minimum 54 Nos. of Bus Shelters in Rajiv Gandhi Salai (IT Corridor) from SRP Tools junction to Siruseri as designated by IT Expressway.

ITEL intends to construct the above bus shelters, through a phased approach, with proposed user and environment friendly designed Shelters with Private Sector Participation on a BOT (Build, Operate & Transfer) basis.

FEATURES

1. New construction of Bus Shelters on BOT basis.
2. Design parameters and specification of the proposed Bus Shelters shall be provided by ITEL.
3. Bus Shelters shall be constructed at specified locations as directed by the ITEL. (Tentative list of busbay location is enclosed)
4. Revenue from the Bus Shelters would be from advertisements.

SCOPE OF WORK

1. Removing the existing paver blocks in the busbay locations, without any damages and replacing the same in place / position after completion of the construction of bus shelters.
2. Necessary site preparation for all locations
3. Construction of new Bus Shelters as per the design provided by ITEL.
4. Construction to be completed within **Nine (9) Months** as directed by ITEL.
5. Operation and Maintenance of Bus Shelters during the Concession period.
6. Essential services for users to be provided by the concessionaire.
7. Ensuring that the Bus Shelter is clean and free of debris, garbage through regular monitoring, maintenance and solid waste collection.
8. Collection of revenues from advertisement during the concession period.
9. Transfer of Bus Shelters to ITEL at the end of Concession period pursuant to successful completion of necessary inspection, renewals/repairs/replacement.

For detailed Scope of Work, RFP document (Part-C) may be referred.

10. To ensure the safety of public in and outside the Bus Shelters.

ELIGIBILITY CRITERIA

1. The bidding firm shall have achieved a minimum annual financial turnover of IN **Rs. 2.20 Crores** for any two (2) years during the preceding five (5) financial years
2. The bidding firm shall have average total liquid assets for a minimum of IN **Rs. 1.40 Crores** for the preceding three (3) financial years.
3. The firms/joint ventures/lead partners of consortium shall have completed/under execution at least **30 numbers** of Bus Shelters in India/ Abroad
4. The firms/joint ventures/lead partners of consortia shall have minimum experience in construction, operation and maintenance of urban infrastructure such as Street Furniture, Parking Lots, Commercial Area Development. Transportation Project, Real Estate Development Project or in the field of advertising for a single contract value/ gross realization of revenue from a single client of more than IN **Rs. 1 Crore** in any two (2) years over the preceding five (5) financial year

Note: Please refer detailed Eligibility Criteria enclosed in Section B-1 "Eligibility Criteria"

*Liquidity can be computed by deducting Current Liabilities from Current Assets. Current Assets are cash and bank balances, sundry debtors, inventories, marketable securities, and unutilized fund based facilities.

BID PROCESS

Interested bidders can procure the “Request for Proposal” (RFP) document package between **10.00 Hrs** and **17.00 Hrs** on all working days from **14th December 2012** to **07th January 2013** at the address for communication mentioned below on payment of the Non- Refundable fee of **INR 30,000/- (Rupees Thirty Thousand Only)** by way of a crossed demand draft drawn in favour of **M/s IT Expressway Ltd.**, payable on any scheduled bank in Chennai. Alternatively the RFP document package can also be downloaded from the official website www.tnrdc.com and in such cases, the bidders will be required to pay the non-refundable fee as mentioned above, at the time of submission of proposals. **EMD/Bid Security value for the work INR 5,50,000/- (Rupees Five Lakhs Fifty Thousand Only)**. The proposals shall be submitted through Two - Cover System (Technical and Financial Proposals in separate envelopes).

Evaluation of submitted bids for the project shall be performed by following a Two Tier/ Two-Cover system. First tier shall involve Pre-Qualification/ Technical Qualification stage of eligible bidders based on the specified evaluation and eligibility criteria. First tier shall also comprise evaluation of technical conditions of the bidders based on their bids containing details of construction, operation, and maintenance of the Bus Shelters. Second tier/ Financial Qualification stage would be the evaluation of financial bids.

ITEL reserves the right to reject any or all applications and their decision in this regard shall be final.

SUBMISSIONS OF BIDS

Interested bidders are requested to submit their bids, in a sealed envelope super-scribed as **“Construction & Maintenance of 54 Nos. of Modern Bus Shelters along Rajiv Gandhi Salai (IT Corridor) from SRP Tools Junction to Siruseri in 17 Km Road under BOT Basis in Chennai, Tamil Nadu”** and the Sealed Proposals should reach the office of M/s. IT Expressway Ltd, Sindur Panthion Plaza, 2nd Floor, 346-Pantheon Road, Egmore, Chennai-600008, Tamil Nadu, not later than **15.00 Hrs** on **09th January 2013**.

A Pre-Bid Conference shall be held on **21st December 2012**, **15.00 Hrs** at the Office of M/s. IT Expressway Ltd, IT Expressway, Sindur Panthion Plaza, 2nd Floor, 346-Pantheon Road, Egmore, Chennai-600008.

All prospective applicants are invited to attend the pre-bid meeting in order to be briefed on the project and the pre-qualification process. Bidders are requested to note the eligibility criteria and evaluation criteria from the Bid Document.

All other details can be had from the Bid Documents.

The General Manager (Projects)/ ITEL

M/s. IT Expressway Ltd,

Regd:- Office : Sindur Panthion Plaza,
2nd Floor, No. 346, Pantheon Road,
Egmore, Chennai – 600 008,
Tamilnadu, India.

Phone : 091-44-2819 4800 / 4900

Fax No. 091-44-2819 5800

E.Mail: tenders@tnrdc.com

Website : www.tnrdc.com

PART A:
INSTRUCTIONS TO BIDDERS

Disclaimer

The information contained in this Request for Proposal (RFP) document Package provided to interested Bidders on behalf of M/s. IT Expressway (**ITEL**), is being provided to all Bidders on the terms and conditions set out in this RFP document. This RFP document package is not an agreement and is not an offer or invitation to any other party. The purpose of this RFP document package is to provide bidders with information to assist in the formulation of their proposal submission. This RFP document does not purport to contain all the information each Bidder may require. This RFP document may not be appropriate for all persons, and it is not possible for ITEL to consider the investment objectives, financial situation, and particular needs of each bidder. Each bidder should conduct its own investigation and analysis, and should check the accuracy, reliability, and completeness of the information in this RFP document and obtain independent advice from appropriate sources. ITEL and their advisors make no representation or warranty and shall incur no liability financial or otherwise under any law, statute, rules, or regulations as to the accuracy, reliability or completeness of the RFP document. ITEL may in their absolute discretion, but without being under any obligation to do so, update, amend or supplement the information in this RFP document.

TABLE OF CONTENTS

| S. No. | Topic | Page Number |
|---------------|--|--------------------|
| A-1 | Letter of invitation | 14 |
| A-2 | Project Brief | 15 |
| A-3 | Project Framework | 16 |
| A-4 | Bidder's responsibility before proposal submission | 17 |
| A-5 | Cost Of Document | 18 |
| A-6 | Clarification Of RFP Documents | 18 |
| A-7 | Pre-bid meeting | 18 |
| A-8 | Bid Security | 19 |
| A-9 | Validity of proposal and Bid Security | 19 |
| A-10 | Amendment of RFP document | 19 |
| A-11 | Clarification From Bidders | 19 |
| A-12 | Language | 20 |
| A-13 | Proposal Documentation | 20 |
| A-14 | ITEL right to accept and reject Proposal | 20 |
| A-15 | Proposal submission due date | 20 |
| A-16 | Submission of Bids | 20 |
| A-17 | Late Bids | 21 |
| A-18 | Opening of Bids | 21 |
| A-19 | Confidentiality | 21 |
| A-20 | Test of Responsiveness | 22 |
| A-21 | Evaluation and Comparison of Proposal | 22 |

| | | |
|------|------------------------------|----|
| A-22 | Selection and Notification | 22 |
| A-23 | Award of Contract | 23 |
| A-24 | Extension of Validity of Bid | 23 |

A-1 LETTER OF INVITATION

- 1.1 IT Expressway Ltd, (ITEL) plans to Construct 54 nos. of Modern Bus Shelters along Rajiv Gandhi Salai (from SRP Tools to Siruseri in 17 Km road) with private sector participation, as designated by IT Expressway Ltd,, numbering minimum 54 nos. with new user and environment friendly design on Build, Operate & Transfer (BOT) basis.
- 1.2 This Request for Proposal Document is issued from the Contracts Department, TNRDC on behalf of ITEL to private sector parties interested in undertaking Construction, Operation and Maintenance of the Bus Shelters in Rajiv Gandhi Salai (from SRP Tools to Siruseri) on BOT basis.
- 1.3 Request for Qualification (RFQ) is sought from registered firms (which include companies, partnership firms, proprietary concerns, etc. who are interested in bidding for the Project either individually or as a consortium of such firms. The Private Sector Party (PSP) would be required to develop the Bus Shelters in Rajiv Gandhi Salai (from SRP Tools to Siruseri in 17 Km road) by undertaking Construction, Operation and Maintenance of the Bus Shelters and other facilities for a specified concession period. They would be permitted to earn revenue from advertisement as described in the documents.
- 1.4 A Single Stage bidding process under Two Cover System is being adopted for the project:
 - a. **Pre Qualification /Technical Qualification Stage:** - involves qualification, which includes submission of a Request for Qualification (RFQ) by the bidding firm and evaluation of the same. It also comprises evaluation of technical conditions of the bidders based on their bids containing details of construction, operation and maintenance of the Bus Shelters
****The Technical Proposal shall not contain any Financial Details***
 - b. **Financial Qualification Stage:-** will consist of evaluation of Financial Proposal of only those Bidders qualified in the Technical Qualification stage as per the evaluation criteria laid down in the RFP Document to select the Preferred Bidder for Construction, Operation & Maintenance of Bus Shelters in Rajiv Gandhi Salai (from SRP Tools to Siruseri).
 - c. The RFP Document Package comprises of:
 - Part A: Instructions to Bidders
 - Part B: RFQ Document
 - Part C RFP Document
 - Part D: Draft Concession Agreement
- 1.5 All data provided as a part of the RFP Document Package is for guidance and general information purposes. The same should be verified by the bidder for use as a part of preparing their proposals for the project.
- 1.6 As part of RFQ, Bidding Firms are required to submit their general and particular experience, technical capabilities, and commitment to finance the Construction, Operation & Maintenance activities and financial standing of the Bidding Firm. Bidding Firm would be qualified based on their past experience in similar infrastructure projects and financial strength as per the criteria laid down. Only the bidding firms qualified under this procedure will be evaluated for choosing the preferred bidder.
- 1.7 The Technical Proposal and the Financial Proposal (in separate envelopes)along with the RFP Document Package duly signed, completed and sealed in respective envelopes and as per the procedure explained herein must be delivered at the address mentioned below on or before **09th January 2013, 15:00 Hours IST.**

The General Manager (Projects)/ ITEL**M/s. IT Expressway Ltd,**

Regd:- Office : Sindur Panthion Plaza,

2nd Floor, No. 346, Pantheon Road,

Egmore, Chennai – 600 008,

Tamilnadu, India.

Phone : 091-44-2819 4800 / 4900

Fax No. 091-44-2819 5800

E.Mail: tenders@tnrdc.com

Website: www.tnrdc.com

A-2 PROJECT BRIEF**2.1 Background**

Rajiv Gandhi Salai is a major road connecting Chennai with Mamallapuram in Tamil Nadu. It is 45 km long and was earlier known as the Old Mahabalipuram Road (OMR). The road starts from Madhya Kailash Temple Junction on Sardar Patel Road in south-east Chennai and terminates on East Coast Road near Mamallapuram.

The prestigious [TIDEL Park](#), home to a number of BPO and IT/ITES companies and many other major IT/ITES Companies in the country are situated along the Rajiv Gandhi Salai. Prominent technical and educational Institutions, national research laboratories are also located along the Corridor.

Besides, [State Industries Promotion Corporation of Tamil Nadu Ltd \(SIPCOT\)](#) has developed a Cyber City, spread over 2000 acres in Siruseri, abutting the IT Corridor. Many IT/ITES Companies have set up their facilities in the Cyber City.

Chennai is one of the few cities in India to be served by an efficient Public Transport System comprising government transport corporation buses and especially in Rajiv Gandhi Salai. A total of **54 numbers**, along Rajiv Gandhi Salai (IT Corridor) from SRP Tools junction to Siruseri are selected for construction Modern Bus Shelters.

This Bid Document comprises Construction, Operation and Maintenance of minimum 54 numbers of Bus Shelters in Rajiv Gandhi Salai (IT Corridor) as designated by IT Expressway Ltd,.

ITEL intends to construct new Shelters in its jurisdiction as specified above, through a phased approach, with proposed user and environment friendly designed Shelters with Private Sector Participation on a BOT (Build, and Operate & Transfer) basis.

2.2 Rajiv Gandhi Salai (IT Corridor) – a brief note

Rajiv Gandhi Salai is a major road connecting Chennai with Mamallapuram in Tamil Nadu. It is 45 km long and was earlier known as the Old Mahabalipuram Road (OMR). The road starts from Madhya Kailash Temple Junction on Sardar Patel Road in south-east Chennai and terminates on East Coast Road near Mamallapuram.

The prestigious [TIDEL Park](#), home to a number of BPO and IT/ITES companies and many other major IT/ITES Companies in the country are situated along the Rajiv Gandhi Salai. Prominent technical and educational Institutions, national research laboratories are also located along the Corridor.

Besides, [State Industries Promotion Corporation of Tamil Nadu Ltd \(SIPCOT\)](#) has developed a Cyber City, spread over 2000 acres in Siruseri, abutting the IT Corridor. Many IT/ITES Companies have set up their facilities in the Cyber City.

The opening of the Mass Rapid Transit Line along the first three km stretch and the presence of densely populated residential areas along the Kottivakkam-Perungudi stretch had also led to congestion and accidents. The IT Corridor Project aims at improving the Corridor to a world-class facility in tune with the progressive and IT/ITES friendly image of Tamil Nadu.

2.3 Rajiv Gandhi Salai (IT Corridor) – Location

Rajiv Gandhi Salai (IT Corridor) is located in Chennai, which is at 13.04° N 80.07° E on the Southeast coast of India. Rajiv Gandhi Salai is well known as IT Corridor, which starts at Madhya Kailash Junction and ends at Siruseri (Phase – I).

2.4 Bus Shelters

At present, ITEL is maintaining, 9 bus shelters on nearly 3 km of Rajiv Gandhi Salai (IT Corridor).

IT Expressway Ltd, desires to construct additional bus shelters in Rajiv Gandhi Salai from SRP Tools junction to Siruseri in 17 km road with modern user and environment friendly design Bus Shelters with an aesthetic look. The following Annexure enclosed forms part of the Bid Document.

- Annexure 1 - List of Bus Shelters.
- Annexure 2 - Typical Drawing of Bus Shelter
- Annexure 3 - Specification of stainless members of Bus Shelters

A-3 PROJECT FRAMEWORK

3.1 Implementation Strategy

IT Expressway Ltd, (ITEL) intends to establish the project on “Build, Operate and Transfer” (BOT) basis by inviting Private Sector Party (Concessionaire) to finance, construct, operate and maintain the Bus Shelters during the specified Concession Period. ITEL will enter into a Concession Agreement with the Concessionaire for **Nine (9) years** (including Construction period of 9 months) for construction, operation and maintenance of the Bus Shelters.

During this period, the Concessionaire shall carry out the services as per the technical specifications, performance standards, and guidelines given as part of the Concession Agreement. The construction period for the project will be **Nine (9) Months**, with minimum completion of 1/3rd of the total number of bus shelters every quarter, within which the Concessionaire will complete the construction of all Bus Shelters as per the requirements, technical specifications and standards. The Concessionaire would be given the right to collect the revenues from advertisements in the area specified by ITEL within each Bus Shelter. A specified portion of net revenue shall be payable by the Concessionaire to the IT Expressway Ltd, as an annual Concession Fee. The Concessionaire shall pay the specified Concession Fee annually over the Concession Period with a specified annual compounded increase of **five percent (5%)** as per the Schedule of Payment specified by ITEL.

Within 7 days of the date of issue of the Construction Completion Certificate for the works, ITEL shall appoint a Committee, which shall consist of members from ITEL and the Concessionaire.

The title of interest, ownership, and rights with regard to Bus Shelters constructed by the Concessionaire for ITEL along with fixtures/fittings provided therein and the land allotted by the ITEL shall vest with the ITEL except that these will be operated and maintained by the Concessionaire as agreed in this Agreement. The assets created by the Concessionaire will be owned by the concessionaire during the period of the Concession and will be transferred to ITEL upon the expiry or earlier termination of the Concession Agreement.

3.2 Scope of Work:

- 1) Necessary site preparation for all locations
- 2) Construction of new Bus Shelters as per design provided by ITEL.
- 3) Construction to be completed within **Nine (9) Months** as directed by ITEL.
- 4) Operation and Maintenance of Bus Shelters during the Concession period.
- 5) Essential services for users to be provided by the concessionaire.
- 6) Ensuring that the Bus Shelter is clean and free of debris, garbage through regular monitoring, maintenance and solid waste collection.
- 7) Collection of revenues from advertisement during the concession period.
- 8) Transfer of Bus Shelters to ITEL at the end of Concession period pursuant to successful completion of necessary inspection, renewals/repairs/replacement.
- 9) To ensure the safety of the public in and outside the Bus Shelter.

For detailed Scope of Work, RFP document (Part-C) may be referred.

A-4 BIDDER'S RESPONSIBILITY BEFORE PROPOSAL SUBMISSION

- 4.1 The Bidder shall be responsible for all of the costs associated with the preparation of the Proposal and their participation in the selection process. ITEL will not be responsible or in any way liable for such costs, regardless of the conduct or outcome of the selection process.
- 4.2 The Bidder shall ensure that the bid is complete in all respects and conforms to all requirements indicated in the RFP document.
- 4.3 Site Visit, Traffic Study and Field Investigations, if any, The Bidder shall visit and examine the site and obtain for themselves, at their own responsibility, all the information and data that may be necessary for submission of bid, and entering into concession for construction of the Bus Shelters, and subsequent operation and maintenance of the same. The Bus Shelter related information, which has been provided in this RFP document, is intended to guide the bidders in preparing their proposal only. ITEL shall not stand guarantee for and shall not be held responsible for the veracity of the data related to cost and revenue, which have been made available in this document.
- 4.4 Costs associated with Visits and Field Investigations, if any: The costs of visiting the site, and undertaking any further studies and investigations shall be at the Bidder's own expense. The Bidder and any of his personnel or agents can visit site.
- 4.5 Familiarity with Clearances: The Bidder should be familiar with the clearances required from various authorities to commence work. A Bidder shall be deemed to have carried out preliminary checks with relevant authorities.
- 4.6 It would be deemed that by submitting the Bid, the Bidder has:
 - Made a complete and careful examination of the RFP document
 - Obtained all relevant information about the project.

- 4.7 ITEL shall not be liable for any mistake or error on the part of the Bidder in respect of the above.

A-5 COST OF DOCUMENT

- 5.1 The Request for Proposal (RFP) Document Package can be obtained from the Contracts Department-TNRDC, Sindur Panthion Plaza,2nd Floor,346-Pantheon Road,Egmore,Chennai-600008,Tamil Nadu, India on payment of the Non-Refundable fee **INR 30,000/- (Rupees Thirty Thousand Only)** via Demand Draft drawn of any Nationalized/ Scheduled Bank drawn in favour of "M/s. IT Expressway Ltd," payable at Chennai, from **14th December 2012 to 07th January 2013** at the specified address on all working days between **10.00 hours to 17.00 hours**. The Bidding Firm shall bear all costs associated with the preparation and submission of its RFQ or Proposal, and ITEL will in no case be responsible or liable for these costs regardless of the conduct or outcome of the selection process. Bid Documents can also be downloaded from the website www.tnrdc.com on payment of the Non-refundable fee as mentioned above at the time of submission of the proposal. ITEL will in no case be responsible or liable for any problem that the Bidder may encounter while downloading.
- 5.2 The Bidders are advised to inspect and examine the site and its surroundings and satisfy them before submitting their proposal. A bidder shall be deemed to have full knowledge of the site whether he inspects it or not and no extra charges consequent upon any misunderstanding or otherwise shall be allowed.

A-6 CLARIFICATIONS OF RFP DOCUMENTS

- 6.1 The prospective Bidding Firm requiring any clarification of the RFP documents may notify the ITEL in writing by post, e – mail, courier or by facsimile at the address given in the Letter of Invitation up to two (2) days in advance of the Pre-Bid meeting i.e., on or before **19th December 2012**
- 6.2 ITEL reserves the right not to respond to non-relevant questions raised by Bidding Firm or to provide clarifications if ITEL, in its sole discretion, considers that it would be inappropriate to do so. Nothing in this section shall be taken or read as compelling or requiring ITEL to respond to any questions to provide any clarification. No extension of any deadline will be granted on the basis or grounds that ITEL has not responded to any question or provided any clarification.

A-7 PRE-BID MEETING

- 7.1 A pre-bid meeting shall be held for any clarifications and replies to the queries of bidders.
- 7.2 A pre-bid meeting shall be held on **21st December 2012 at 15:00 hours** at the Office of IT Expressway Ltd., Sindur Panthion Plaza,2nd Floor, 346-Pantheon Road,Egmore,Chennai-600008. Bidders will be required to send their queries in writing or mail at least two (2) days prior to the pre-bid meeting addressing to The General Manager (Projects)/ITEL, IT Expressway Ltd., Sindur Panthion Plaza,2nd Floor,346-Pantheon Road,Egmore,Chennai-600008, Tel.: 091 -44-2819 4800 / 4900, Fax.: 091 -44-2819 5800, E- mail; tenders@tnrdc.com
- 7.3 Minutes of the meeting, including the text of the questions raised and the responses given, would be sent to all prospective Bidders. Any modifications of the RFP

document package, which may become necessary as a result of the Pre-bid meeting, shall be through the issue of an addendum.

- 7.4 Non-attendance at the pre-bid meeting will not be a cause for disqualification of a Bidder. However, all clarifications and modifications presented in the Addendum will be legally binding on all the Bidders irrespective of their attendance at the Pre-Bid Conference.

A-8 BID SECURITY / Earnest Money Deposit (EMD)

All proposals submitted in response to the Request for Proposal (RFP) Document package shall be accompanied by a Bid Security/EMD of **INR 5, 50,000/- (Rupees Five Lakhs Fifty Thousand Only)**. in the form of Demand Draft or in the form of irrevocable Bank Guarantee from any Scheduled or Nationalized Bank in the prescribed format pledged in favour of "M/s. IT Expressway Ltd," payable at Chennai.

A-9 VALIDITY OF PROPOSAL AND BID SECURITY

- a. Proposal shall remain valid for a period of 180 days from the Proposal Submission Date. ITEL reserves the right to reject any Bid, which does not meet this requirement.
- b. The Bid Security shall be valid for Three Months beyond the initial validity of the proposal as specified above.
- c. Any bid not accompanied with an acceptable Bid Security/EMD shall be rejected.
- d. The Bid Security of the unsuccessful Bidders would be returned after the acceptance of the Letter of Award to the successful bidder.
- e. The Bid Security of the successful Bidder will be discharged when the successful Bidder has signed the agreement and furnished the Performance Security.
- f. The Bid Security shall be forfeited under the following conditions:
 - If the Bidder withdraws the Proposal during the period of Proposal validity.
 - In the case of a successful Bidder, if the bidder fails to sign the Concession Agreement within the stipulated time or fails to furnish the required Performance Security within the specified period.

A-10 AMENDMENT TO RFP DOCUMENT

- a. At any time prior to the deadline for submission of Proposal, ITEL may, for any reason, whether at its own initiative or in response to clarifications requested by any Bidder, modify the RFP Document by the issuance of Addenda.
- b. Any Addendum thus issued will be sent in writing to all pre qualified bidders.
- c. ITEL may, at its discretion, extend the Proposal Submission Due Date.

A-11 CLARIFICATION FROM BIDDERS

To assist in the evaluation of Proposal submitted by bidders, ITEL may, at its discretion, ask any bidder for clarification of its Proposal. The request for clarification and the response shall be in writing.

A-12 LANGUAGE

The Proposal submission and all related correspondences should be written in the English language. Supporting documents and printed literature furnished by bidders with the

Proposal may be in any other language provided that they are accompanied by Certified Translation of the document and/or pertinent passages into the English language. Supporting materials, which are not translated into English, may not be considered. For the purpose of interpretation and evaluation of the Proposal, the English language translation shall prevail.

A-13 PROPOSAL DOCUMENTATION

- 13.1 The Proposal should have no overwriting except as necessary to correct errors made by the Bidders themselves, in which case such corrections must be initialed by the person signing the Proposal.
- 13.2 The Proposal and its copies shall be typed or written in indelible ink and the authorized representative of the Bidder shall initial each page. All the alterations, omissions, additions, or any other amendments made to the Proposal shall be initialed by the person (s) signing the Bid.

A-14 IT EXPRESSWAY LTD. (ITEL) RIGHT TO ACCEPT AND REJECT PROPOSAL

Notwithstanding anything contained in the RFP document, ITEL reserves the right to accept or reject all Proposal submissions, at any time without assigning any reason for cancellation.

A-15 PROPOSAL SUBMISSION DUE DATE

Proposal will be received up to **15:00 Hours (IST) on 09th January 2012** at Office of M/s. IT Expressway Ltd., Sindur Panthion Plaza, 2nd Floor, 346-Pantheon Road, Egmore, Chennai-600008. Any Proposal, which is received after the prescribed deadline shall be returned, unopened.

A-16 SUBMISSION OF BIDS

The bidder shall prepare and submit their proposals in **One Original only** clearly marking **ORIGINAL** and as per the procedure detailed below:

- 16.1. The original of the Bid Security (FDR or Bank Guarantee) of the required value and with approved format shall be sealed separately in an envelope mentioning: Envelope - **A1** "BID SECURITY FOR CONSTRUCTION & MAINTENANCE OF 54 NOS. OF MODERN BUS SHELTERS ALONG RAJIV GANDHI SALAI (IT CORRIDOR) FROM SRP TOOLS JUNCTION TO SIRUSERI IN 17 KM ROAD UNDER BOT BASIS IN CHENNAI, TAMIL NADU." **(ORIGINAL ONLY)**
- 16.2. The original of the Qualification Proposal (RFQ) and (RFP) and details of construction, operation & maintenance of bus shelters shall be sealed separately in the envelope mentioning: Envelope – **A2** 'QUALIFICATION PROPOSAL FOR CONSTRUCTION & MAINTENANCE OF 54 NOS. OF MODERN BUS SHELTERS ALONG RAJIV GANDHI SALAI (IT CORRIDOR) FROM SRP TOOLS JUNCTION TO SIRUSERI IN 17 KM ROAD UNDER BOT BASIS IN CHENNAI, TAMIL NADU **(ORIGINAL ONLY)**
- 16.3. The original of the Financial Proposal shall be sealed separately in the envelope mentioning: Envelope – **B** 'FINANCIAL PROPOSAL FOR CONSTRUCTION & MAINTENANCE OF 54 NOS. OF MODERN BUS SHELTERS ALONG RAJIV GANDHI SALAI (IT CORRIDOR) FROM SRP TOOLS JUNCTION TO SIRUSERI IN 17 KM ROAD UNDER BOT BASIS IN CHENNAI, TAMIL NADU **(ORIGINAL ONLY)**

- 16.4. The original of the Qualification Proposal (RFQ) & (RFP) and Financial Offers shall also be sealed separately before sealing in their respective envelopes of A2 and B respectively.
- 16.5. All the above envelopes viz. 'A1', 'A2', and 'B' shall then be sealed in **One Outer Envelope**.
- 16.6. The inner and outer envelopes shall be addressed to **The General Manager (Projects) / ITEL**, IT Expressway Ltd, Chennai at the address provided in the Para 7.2
- 16.7. The outer and inner envelopes shall also clearly indicate the name and address of the Bidder.
- 16.8. If the outer envelope is not sealed with sealing wax and signed twice across the sealed portion and marked as specified above, IT Expressway Ltd, will assume no responsibility for the misplacement or premature opening of the Proposal.
- 16.9. IT Expressway Ltd, must receive proposals at the address no later than the time and date stipulated in the Para 15.

A-17 LATE BIDS

IT Expressway Ltd, will not, accept any Proposal received after the Proposal Submission Due Date and Time. Late submission will be rejected and returned unopened.

A-18 OPENING OF BIDS

- 18.1. The bids as received shall be opened by the Tender Scrutiny Committee, at **15:30 Hours (IST) on 09th January 2013 at 15.30 Hrs** in the address prescribed in A-15 for receipt of proposals in the presence of Bidders/Bidder's Authorised Representatives who choose to be present. On opening of the main envelope, it will be checked if it contains the following documents:
 - Bid Security (Envelope A1)
 - Qualification Proposal (RFQ) and (RFP) (Envelope A2)
 - Financial Proposal (Envelope B)
- 18.2. The Bid Security will be opened first and will be checked for its requisite value and format.
- 18.3. In case the Bid Security found to be acceptable, then the Qualification Proposals shall be opened and processed further.
- 18.4. If the documents do not contain Bid Security, or not of required value or not in acceptable form, the offers submitted will be rejected.
- 18.5. The Financial proposal shall not be opened on that day and shall be kept separately in the safe custody of ITEL to be opened and evaluated later on as per the procedure detailed herein.

A-19 CONFIDENTIALITY

IT Expressway Ltd, will treat all information submitted as part of Proposal in confidence and would require all those who have access to such material to treat the same in confidence. IT Expressway Ltd, will not divulge any such information unless it is ordered to do so by any authority that has the power under law to require its disclosure.

A-20 TESTS OF RESPONSIVENESS

- 20.1. Prior to evaluation of Proposal submission, Department will determine whether each Proposal is responsive to the requirements of the RFP document. Any Proposal submission shall be considered responsive if:
- Received by the Proposal Submission Due Date including any extension thereof.
 - Signed, sealed and marked as stipulated in clause A-16
 - Accompanied by the acceptable EMD/Bid Security
 - Contains all the information as requested in the RFP document
 - Mentions the validity period as set out in clause A-9
- 20.2. ITEL reserves the right to reject any Proposal submission which is non - responsive and no request for alteration, modification, substitution or withdrawal shall be entertained in respect of such Proposal submissions.

A-21 EVALUATION AND COMPARISON OF PROPOSALS

ITEL will evaluate and compare the proposal determined to be substantially responsive in accordance with Clause No A-20 and as per the procedure detailed below.

i) RFQ Evaluation

ITEL will evaluate the pre-qualification proposals (RFQ) of the various bidders as per the pre-defined evaluation criteria. Evaluation of the qualification proposals will be on Pass/ Fail basis. Only those bidders, whose qualification proposal meets the specified eligibility criteria, will be opened for Financial evaluation. Only those firms, whose pre-qualification proposal/ Technical Proposal meets the aforementioned requirement will be nominated as qualified bidders for the purpose of opening of financial bids and their evaluation. ITEL shall notify to qualified bidders the outcome of pre-qualification evaluation. The Financial offers of those bidders who do not qualify the pre-qualification criteria shall be returned unopened and no claim in this regard shall be entertained

ii) OPENING OF FINANCIAL BID AND EVALUATION

- a. ITEL would intimate the date and venue of the opening of the Financial Proposal of only those bidders who pass through the pre-qualification/ Technical Qualification stage, with a request to be present at the time of the opening.
- b. The Financial Bids would be opened and read out aloud on the said date and venue in the presence of the representatives of the bidders who choose to be present.
- c. Evaluation of Financial Proposal shall include the following:
 - The bidder quoting the highest Concession Fee shall be the successful bidder
 - Total amount of Annual Concession Fee expressed in Indian Rupees per year and payable to ITEL over the concession period on an annual recurring basis and adhering to a compounded **five percent (5%)** annual increase of Concession Fee for the first 9 years and in the case of any extended period beyond 9 years compounded.
 - Arithmetical errors as corrected
 - In the event of multiple bids quoting the same highest amount of Concession Fee, the ITEL shall resort to inviting only those bidders for submission of a revised financial quote within such time as may specified by ITEL.

A-22 SELECTION AND NOTIFICATION

The highest evaluated bidder would be selected as successful bidder and would be intimated through a "Letter of Award".

A-23 AWARD OF CONTRACT

- 23.1. Upon issuance of the "Letter of Award" the selected bidder shall have to sign the **Concession Agreement** within thirty (30) days of "Letter of Award".
- 23.2. If the Concession Agreement is not signed by the selected bidder within 30 days of issuance of the "Letter of Award", then ITEL reserves the right to withdraw the offer, and proceed ahead in any manner it deems fit. In such an eventuality, the EMD/Bid Security of selected bidder would be forfeited. The successful bidder would have to furnish Performance Security as specified in the Schedule of Agreement, before signing of the Concession Agreement. Till such time, the EMD/Bid Security of the successful Bidder would remain effective and in possession of ITEL.

A-24 EXTENSION OF VALIDITY OF BID

In exceptional circumstances, prior to expiry of the original Proposal Validity Period, ITEL may request the pre-qualified Bidders in writing to extend the Proposal Validity Period for a specified additional period.

ANNEXURE – 1

BUSBAY LOCATIONS**MS - 3****CHAINAGE: 13300 - 20000**

| SNO | BUS BAY LOCATIONS | L.H.S | | No.of Bus Shelters | SNO | R.H.S | | No.of Bus Shelters |
|--------------------------|-------------------|----------|-------|--------------------|-----|----------|-------|--------------------|
| | | CHAINAGE | | | | CHAINAGE | | |
| | | FROM | TO | | | FROM | TO | |
| 1 | SRP Tools | 13375 | 13475 | 2 | 10 | 13400 | 13500 | 2 |
| 2 | IGP | 14120 | 14200 | 1 | 11 | 13905 | 14005 | 1 |
| 3 | Kandanchavadi | 15010 | 15110 | 2 | 12 | 14800 | 14900 | 2 |
| 4 | Perungudi | 15676 | 15776 | 2 | 13 | 15750 | 15850 | 2 |
| 5 | Seevaram | 16600 | 16700 | 1 | 14 | 16668 | 16768 | 1 |
| 6 | Jain college | 17210 | 17310 | 2 | 15 | 17210 | 17310 | 2 |
| 7 | Mettukuppam | 18160 | 18260 | 1 | 16 | 18160 | 18260 | 1 |
| 8 | PTC Quarters | 18760 | 18860 | 1 | 17 | 18900 | 19000 | 1 |
| 9 | Okkiyam pettai | 19740 | 19840 | 1 | 18 | 19740 | 19840 | 1 |
| Total No.of Bus Shelters | | | | | | | | |
| | | | | 13 | | | | |
| | | | | | 13 | | | |

BUSBAY LOCATIONS**MS - 2****CHAINAGE: 20000 - 30300**

| SNO | BUS BAY LOCATIONS | L.H.S | | No.of Bus Shelters | SNO | R.H.S | | No.of Bus Shelters |
|--------------------------------|-----------------------|----------|-------|--------------------|-----|----------|-------|--------------------|
| | | CHAINAGE | | | | CHAINAGE | | |
| | | FROM | TO | | | FROM | TO | |
| 1 | TCS | 20430 | 20530 | 1 | 13 | 20400 | 20500 | 1 |
| 2 | Karapakkam | 21125 | 21225 | 2 | 14 | 21110 | 21210 | 2 |
| 3 | Accenture | 21950 | 22050 | 1 | 15 | 21780 | 21880 | 1 |
| 4 | Sholinganallur | 22750 | 22850 | 2 | 16 | 22260 | 22360 | 2 |
| 5 | Aavin | 23330 | 23430 | 1 | 17 | 23250 | 23350 | 1 |
| 6 | Ponniyamman temple | 24200 | 24300 | 1 | 18 | 24150 | 24250 | 1 |
| 7 | Kumaran Nagar,TCS | 25070 | 25170 | 1 | 19 | 25100 | 25200 | 1 |
| 8 | Sathyabama University | 25720 | 25820 | 1 | 20 | 25830 | 25930 | 1 |
| 9 | Semmenchery | 27090 | 27190 | 1 | 21 | 26870 | 26970 | 1 |
| 10 | Navallur | 28740 | 28840 | 1 | 22 | 28740 | 28840 | 1 |
| 11 | Egattur | 29655 | 29755 | 1 | 23 | 29600 | 29700 | 1 |
| 12 | Egattur | 30140 | 30240 | 1 | 24 | 30050 | 30150 | 1 |
| Total No.of Bus Shelters | | | | | | | | |
| | | | | 14 | | | | |
| Grand Total No.of Bus Shelters | | | | | | | | |
| | | | | 27 | | | | |
| | | | | | 14 | | | |
| | | | | | 27 | | | |

Grand Total No.of Bus Shelters (LHS + RHS)

54

ANNEXURE – 2



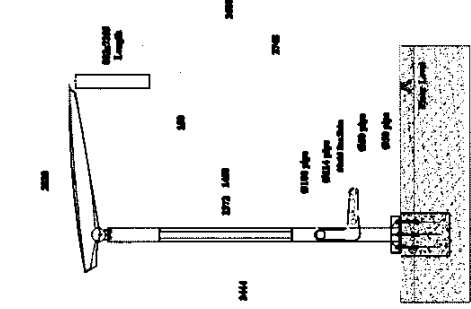
PRODUCED BY AN AUTODESK EDUCATIONAL PRODUCT

8

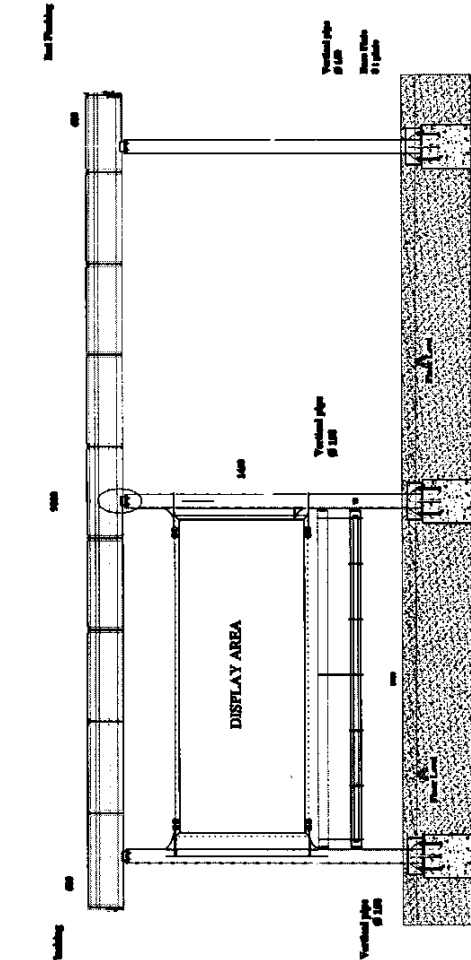
7

2

PRODUCED BY AN AUTODESK EDUCATIONAL PRODUCT



SIDE VIEW



ELEVATION

PRODUCED BY AN AUTODESK EDUCATIONAL PRODUCT

A

Autodesk
1455 California Street
Berkeley, CA 94704
415.754.2000

Autodesk Educational Products
1455 California Street
Berkeley, CA 94704
415.754.2000

F

APPROVED BY
DATE

DESIGNED BY
DATE

CHECKED BY
DATE

APPROVED BY
DATE

DESIGNED BY
DATE

CHECKED BY
DATE

APPROVED BY
DATE

DESIGNED BY
DATE

CHECKED BY
DATE

APPROVED BY
DATE

DESIGNED BY
DATE

CHECKED BY
DATE

APPROVED BY
DATE

DESIGNED BY
DATE

CHECKED BY
DATE

PRODUCED BY AN AUTODESK EDUCATIONAL PRODUCT

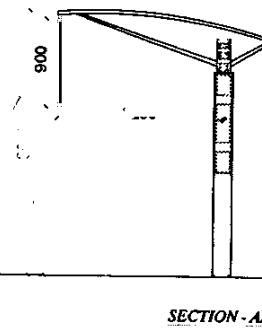
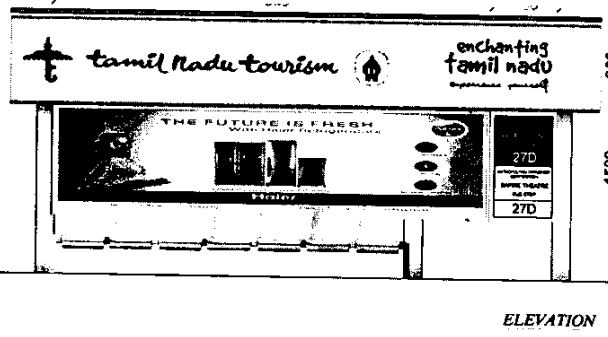
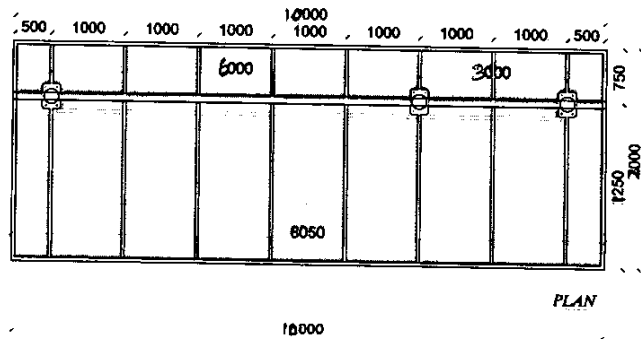
REVISIONS ARE IN MM

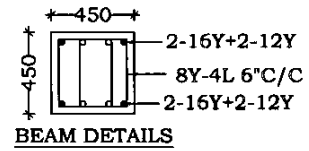
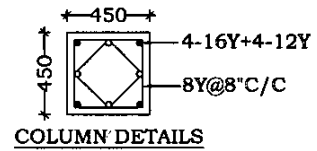
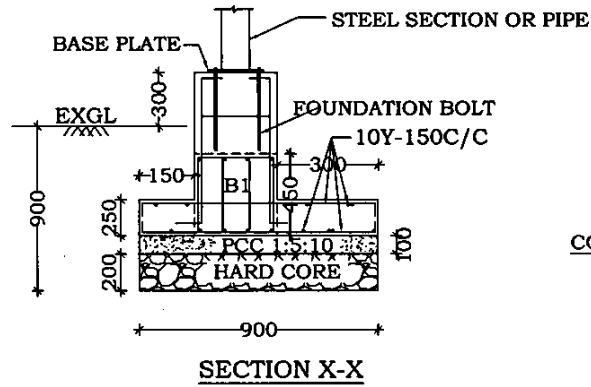
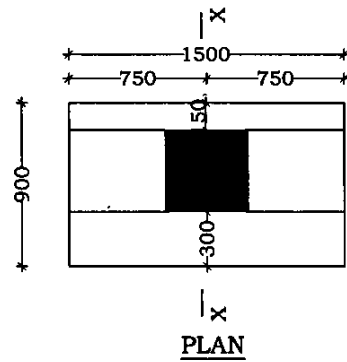
ELEVATION

2

8

BUS SHELTER





| | | | |
|--|--|--|---|
| <p>DRAWING TITLE: FOUNDATION DETAILS (PROPOSAL -I)</p> | <p>PROJECT TITLE: BUS SHELTER GENERAL ASSEMBLY</p> | <p>DESIGNED BY: S.Ramachandran, M.E., D.I.I.T TEL: +91 9045 8946, 9046 8946 OFF 044-23660006</p> | <p>DRAWN BY: TAMIL CHECKED BY: SELVAN</p> |
|--|--|--|---|

ANNEXURE – 3

**Specification of Stainless
Members of Bus Shelter
ASTM - 304 Grade - Steel**

| S.No | Description | Material Specification |
|------|--|---|
| 1 | Vertical Post | 225mm OD 3mm thick |
| 2 | Main Horizontal Member | 225mm OD 3mm thick |
| 3 | Top Roof Sheet frame - Front | 40X40 mm Squaretube 2mm thick |
| 4 | Top Roof Sheet frame - Back | 40X40 mm Square tube 2mm thick |
| 5 | Profile for Roof Member (Lacer cut front) | 5mm thick Sheet (Pair)cut to profile (625 X2500) |
| 6 | Profile for Roof Member (Lacer cut rear) | 5mm thick Sheet (Pair) cut to profile (600 X425) |
| 7 | Profile for Roof End Flash (Lacer cut) | 1.6mm thick Sheet (Pair) cut to profile |
| 8 | Front Flashing | 1.6mm thick Folded Section |
| 9 | Front Sheet Strip for Name | 1.6mm thick Folded Section |
| 10 | Gutter | 1.6mm thick Folded Section |
| 11 | Intermediate Seating Pipe | 150 mm OD 3mm thick |
| 12 | Back Rest Pipe | 100 mm OD 3mm thick |
| 13 | Seating | 1.6mm thick Perforated Sheet |
| 14 | Seating Brackets (Lacer cut) | 6mm thick Profile, lacer cut |
| 15 | Intermediate Stiffners for seating | 6mm thick T- Section |
| 16 | Verical Post Dummies | 230 OD 10 mmthick Flange |
| 17 | Horizontal Post Dummies | 231 OD 6 mmthick Flange |
| 18 | Horizontal PostHolder brackets | 10 mm thick Profile sections |
| 19 | Fixer for joining back rest to vertical | 146 OD SS ROD SECTION Milled to design |
| 20 | Fixer for joining seating pipe to vertical | 94 OD SS ROD SECTION Milled to design |

**Specification of Stainless Steel
Members of Independent Side Advt. Pannel**

| S.No | Description | Material Specification |
|------|-----------------|----------------------------|
| 1 | Outer Frame | 1.6mm thick Folder Section |
| 2 | Inside Frame | 50mm OD 3mm thick |
| 3 | Holding Bracket | 10 mm thick Folder Section |
| 4 | Bottom Post | 225 mm Od 3mm thick |
| 5 | Vertical Post | 230 Od 10 mm thick Flange |